



JOHN NEWTON  
& COMPANY LIMITED (EST. 1848)

# NEWTON SYSTEM 500

CAVITY DRAIN MEMBRANE SYSTEM FOR STRUCTURAL WATERPROOFING

FOUNDED IN 1848

John Newton & Co. Ltd. is the longest established independent specialist in damp-proofing, water control and drainage products in the UK. Our products are specified by Architects, Surveyors and Structural Engineers for use across the construction spectrum from new developments to historic buildings including conversions, renovations and refurbishments.

Leaders in our field, we pioneered the development of cavity drainage membrane technology in 1937 with the introduction of the Newtonite pitch-impregnated fibre membrane.

The introduction of the Newlath meshed membrane in 1984 allowed a variety of finishes to be applied directly to the membrane. This was the precursor of the high density studded polyethylene and polypropylene membranes used today.

NEWTON SYSTEM 500

Newton System 500 is a waterproofing system based upon our range of cavity drain membranes, drainage systems and pumping systems. Unlike conventional ‘tanking’, Newton System 500 is not attempting the almost impossible<sup>1</sup> and trying to hold water back, but places designed and maintainable depressurisation voids at known weaknesses in the structure so that ingressing water is simply captured and diverted out of the property.

COMPLETE RANGE OF HIGH QUALITY MEMBRANES

At the core of Newton System 500 is our range of high grade specialist membranes for walls, floors and vaulted ceilings. Designed to accommodate a comprehensive range of wall and floor finishes, simply choose the membrane appropriate for the look and feel demanded by your project. Newton membranes are the highest quality available in the UK, because unlike our competitors, we are not dictated to by one manufacturer and so our independence allows us to demand the specification and quality of the product from a range of suppliers throughout Europe. Newton 508, for example, at 0.6mm thickness, is the strongest and appreciably the highest quality of all the 8mm membranes available.

CERTIFIED, TESTED & APPROVED

John Newton are the holders of BBA certificate 94/3010 which includes Newton System 500. Newton 508, the core cavity membrane of System 500 has been approved by two independent European testing facilities as being suitable as a barrier against Radon gas. Newton 503 Mesh has been tested and approved for use as a tunnel liner by London Underground. All Newton membranes are guaranteed against deterioration for 30 years, and have a life expectancy of at least 50 years (DIN 9001:2000).

PUMPING & DRAINAGE

The quality and effectiveness of Newton System 500 is reliant on a range of proven drainage and pumping products and accessories. These range from our simple yet effective perimeter drainage channels to sophisticated pumping and pump control systems. A full range of packaged sewage systems are also available for your basement project, with systems ranging in size from simple one pump lifting stations to large multi- property sewage stations.

QUALITY INSTALLATION OF A QUALITY WATERPROOFING SYSTEM

Although quick and relatively easy to specify and install, Newton System 500 is a professional fit waterproofing system that should be installed by specialist waterproofing contractors. It is important that the system works first time, but it is also important that the end-client receives the all encompassing guarantees only available from reputable specialists in their field. Newton NSBC Contractors are trained and monitored by John Newton so that we have not just the best waterproofing systems but also the best contractors to diagnose your problem, design your system and then install Newton System 500 to the very highest standards.

<sup>1</sup> In the court case Outwing V Thomas Wetherald, the judge decided it was not possible for an installation to be 100% defect free. Waterproofing that is reliant on providing a barrier that is required to be 100% defect free falls foul of this judgment.

NEWTON SYSTEM 500

BS8102 & DESIGN PRINCIPLES

ADVANTAGES OVER OTHER WATERPROOFING

WALL MEMBRANES

ARCHES, VAULTS & TUNNELS

FLOOR MEMBRANES

DRAINAGE SYSTEMS

PUMPS & PUMPING SYSTEMS

WATERPROOFING EXISTING STRUCTURES

WATERPROOFING NEW-BUILD STRUCTURES

WATERPROOFING HISTORICAL STRUCTURES

JOHN NEWTON & THE PROFESSIONAL SPECIFIER

NEWTON SPECIALIST BASEMENT CONTRACTORS (NSBC)

ANCILLARY PARTS INFORMATION

PUMPING INFORMATION

PAGE

4

6

8

10

12

14

16

17

18

19

20

21

21

22

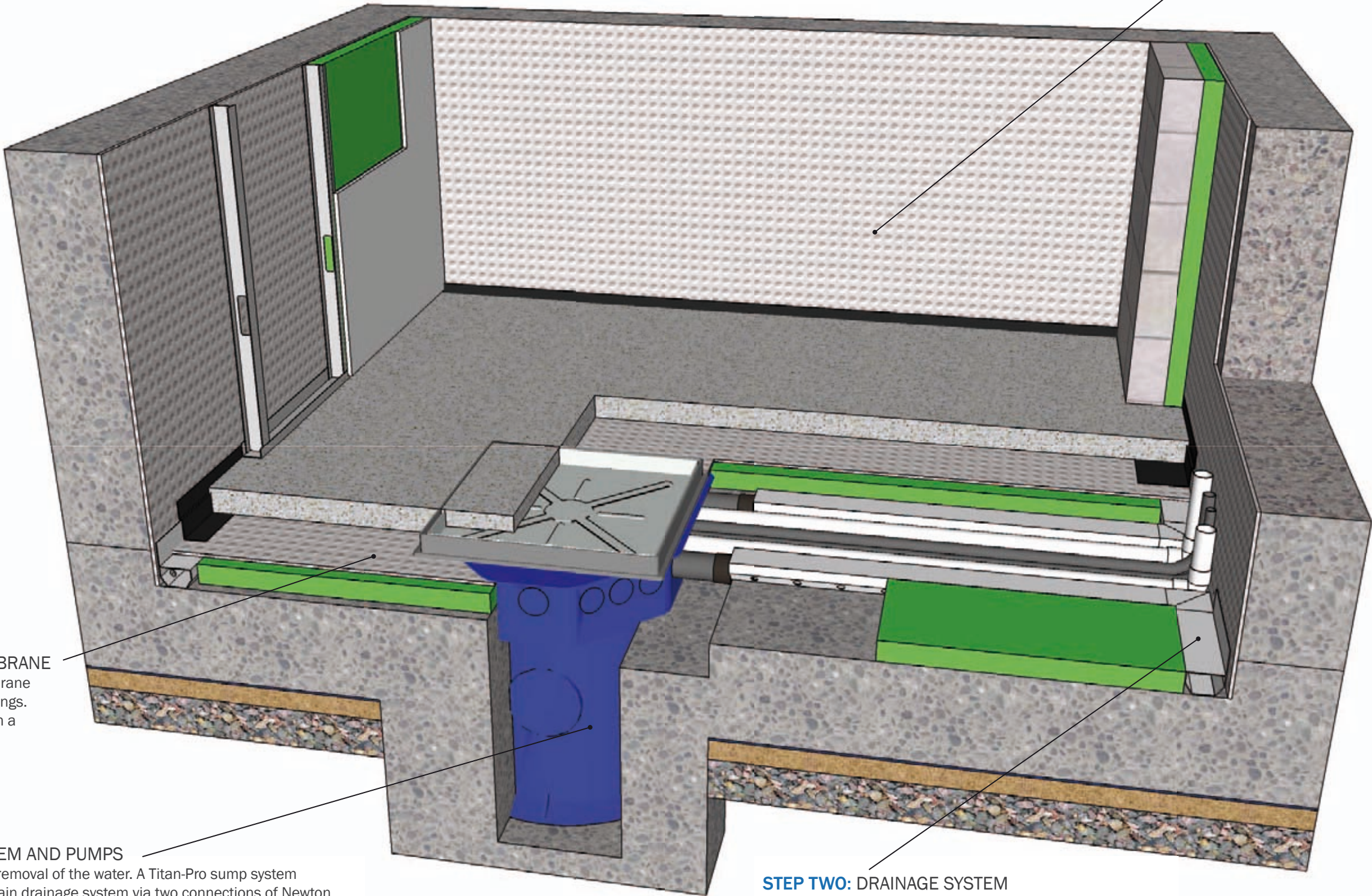
23



# NEWTON SYSTEM 500

Newton System 500 is not only the safest form of waterproofing available, but one of the easiest to understand and specify. A guaranteed dry basement or cellar is just four easy steps away. The image shows Newton System 500 to a new-build concrete construction but the system is equally effective when applied to existing properties and even historical properties.

**STEP ONE: WALL MEMBRANE**  
Chose an appropriate wall membrane to suit your wall finish. In this example, Newton 508 has been chosen for the walls and is shown with both independent metal frame dry-lining and concrete block wall coverings.



**STEP FOUR: FLOOR MEMBRANE**  
Choose the correct floor membrane for your finishes and floor loadings. Newton 508 is shown here with a 65mm screed above.

**STEP THREE: PUMP SYSTEM AND PUMPS**  
Choose the correct method of removal of the water. A Titan-Pro sump system collects water from the Basedrain drainage system via two connections of Newton Floordrain. The pumps (not shown) would be chosen depending on factors such as the pumping head and the type of water collected.

**STEP TWO: DRAINAGE SYSTEM**  
Choose your preferred method of water collection. Here Newton Basedrain is sat above the slab adjacent to a spacer of 50mm of closed cell insulation.



Changes in climatic conditions, rising water tables and sustained periods of high rainfall have increased the incidence of flooding throughout the UK. The designer should presume that structures that are fully or partly earth-retaining are prone to hydrostatic pressure, and as such require waterproofing.

**BS8102:2009**  
British Standard for The Protection Of Structures Against Water From The Ground.

Waterproofing measures should be designed on the basis of water to the full height of the retained ground at some time during the structure's life where:  
a) no detailed geological or hydrogeological assessment has been undertaken;  
b) the results of the soil investigations are inconclusive with respect to groundwater;  
c) the ground drainage characteristics are unreliable;  
d) the drainage measures (either internal or external) are unreliable or un-maintainable and infiltration cannot be controlled.



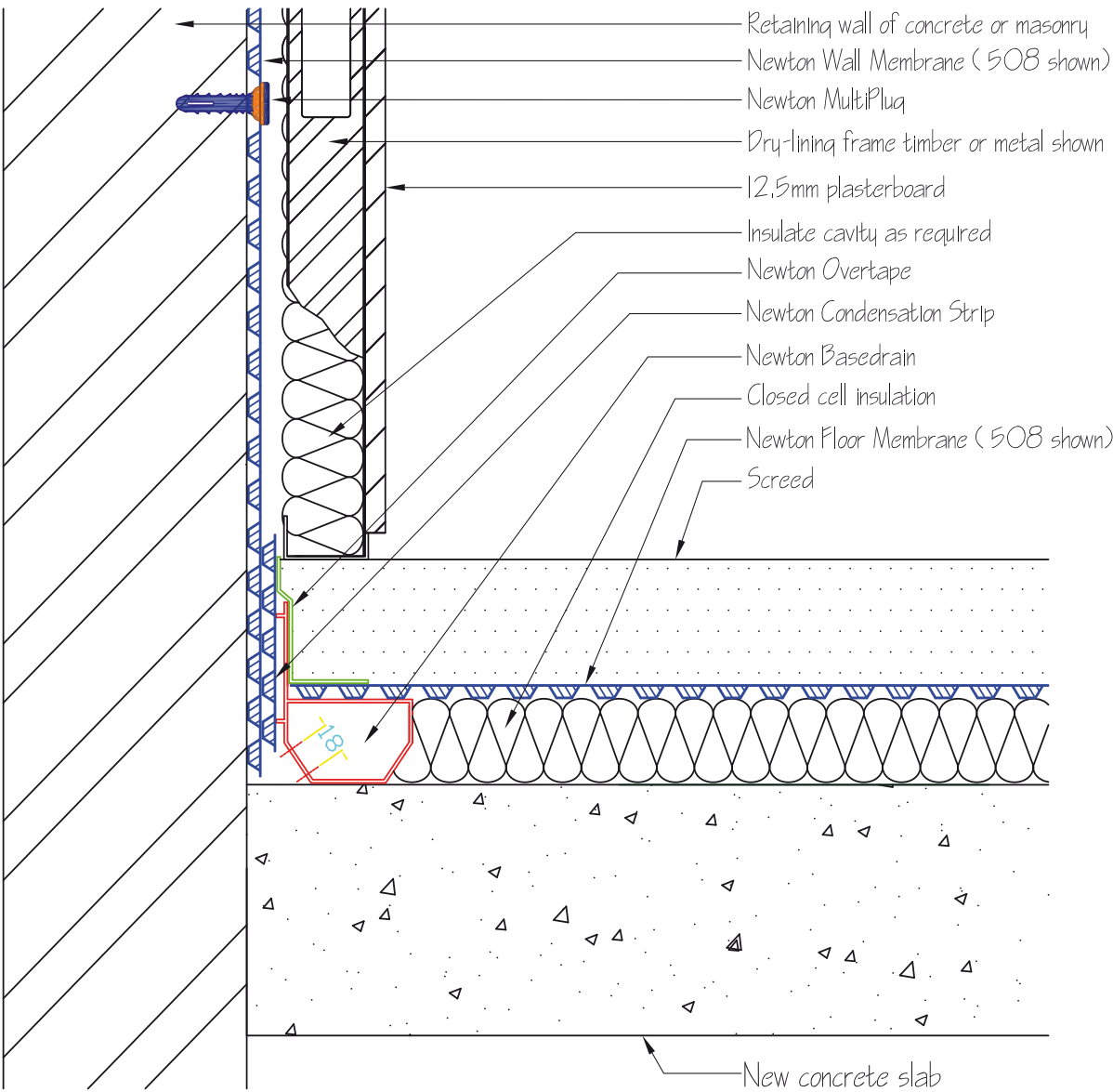
**BS8102:2009 CATEGORISES THE THREE TYPES OF WATERPROOFING PROTECTION AS:**

TYPE A - TANKED PROTECTION  
Protection against water ingress which is primarily dependent on a separate barrier system applied to the structure.  
TYPE B - STRUCTURALLY INTEGRAL PROTECTION  
Protection against water ingress which is primarily provided by the structure.  
TYPE C - DRAINED PROTECTION  
Protection against water ingress into usable spaces which is provided by the incorporation of an appropriate internal water management system.

Basements and cellars are built in two ways:

1. Walls off foundations with a concrete raft poured within the walls
2. Walls supported off the concrete raft

Newton System 500 targets the water where it enters the structure through the construction joints that occur as part of the building process. In the drawing below, the weak point, or the passage of least resistance, is at the junction between the separately formed wall and floor. With this type of construction, it is almost always the case that the water will enter at this point. Newton Basedrain creates a depressurisation space for the water to enter for later removal to the sump or safe drainage.



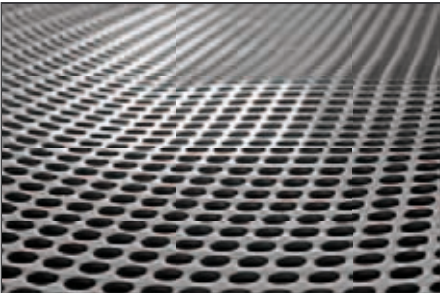
**Newton System 500 is a Type C waterproofing system recognised by BS8102:2009 as the only type of waterproofing that does not change the loading of the structure due to water pressure.**

# ADVANTAGES OVER OTHER WATERPROOFING

Newton System 500 has many advantages over other methods of waterproofing and is often used to deal with failures of other waterproofing systems.

*Newton System 500 is waterproofing by design.  
Understand the problem - deal with the problem!*

TYPE	METHOD	PROBLEM	NEWTON SYSTEM 500
A	Externally applied sheet membranes  Damage to membrane?	Externally applied below the concrete raft, the membrane must survive fixing of the reinforcing steel, the pour and the poking of the concrete. The forming of the walls and other site work then takes place above an extension of the membrane which is left protruding from under the floor ready to seal to the wall membrane. It is likely that the membrane extension will be damaged during building works and unable to provide an effective seal to the wall membrane.	Newton System 500 is applied to the inside of the structure away from the mud of the excavation. In many cases our system is applied once the basement is protected against inclement weather after the ground floor is built. Even if the basement is still open to the elements, Newton System 500 can be installed in all weathers and is installed after most of the building works in the basement are complete.
A	Externally applied waterproofing  100% defect free?	Because of Outwing v Thomas Wetherald, it is now accepted that the externally applied sheet membrane cannot be 100% defect free and requires the ground water to be removed so that it does not make contact with the waterproofing.	Newton System 500 is designed so that a defect to the membrane will not result in a leak as the system is not pressure resistant. Newton System 500 has the added benefit that the system can be tested and seen to be working prior to the installation of the internal fixtures and fittings - it is not possible to test the effectiveness of an applied tanking system.
A	External drainage system as waterproofing  100% removal of water?	Removal of water cannot be guaranteed due to blockages to the land drain and the possibility of back-flow of the drainage. Draining away potentially large volumes of water can create problems due to removal of fines from the soil which could undermine adjacent structures.	Newton System 500 is a cavity drain system that collects and removes water in much lower volumes than would need to be removed by an external drainage system attempting to keep ground water away from the tanking membrane.
A	Internally applied coatings  Cost?	The preparation of the substrate is very rarely carried out in accordance with the manufacturers recommendations due to the time it takes to do this correctly. Preparation causes site disruption with health and safety implications and is damaging to the substrate.	Newton System 500 requires very little substrate preparation and it is possible to fit the membranes to wall and floor more quickly than it would take to simply prepare correctly for internal coatings.
A	Internally applied coatings  Cracking?	With water resisting coatings (Tanking), the external ground water rises creating pressure to the structure. This can induce flexing of the wall and floor as well as rotational forces at the wall floor junction which can lead to cracking and failure of the coating.	Newton System 500 does not resist water pressure and so does not change the structural integrity of the property. Additionally, Newton System 500 does not force the water to other areas as is often the case with tanking coatings.
B	Additives to the concrete  Cost?	Well placed concrete to BS EN1992-1-2, BS EN1992-3 is waterproof except when subjected to massive water pressure. Within basements the concrete structure will only leak at joints to the concrete, not through the concrete. The expensive additive may have qualities such as increasing workability, reducing water content and vapour permeability, but the additive will not prevent water leaks through the construction joints.	A large number of specifiers are recommending Newton System 500 in addition to using an additive in the concrete. The benefits of the additive are appealing to them, but they are quite rightly concerned about the potential for water leaks through construction joints.
B	Construction joints  100% perfect workmanship?	It is good practice to attempt to prevent the flow of water through joints in the concrete. A very high number still leak due to poor installation of the water bar, poor compaction of the concrete, poor product choice or poor preparation of the joint ready for the water bar.	A water bar should be included, but it can never be 100% effective 100% of the time. Newton System 500 will deal with any leaks from these joints in the concrete.







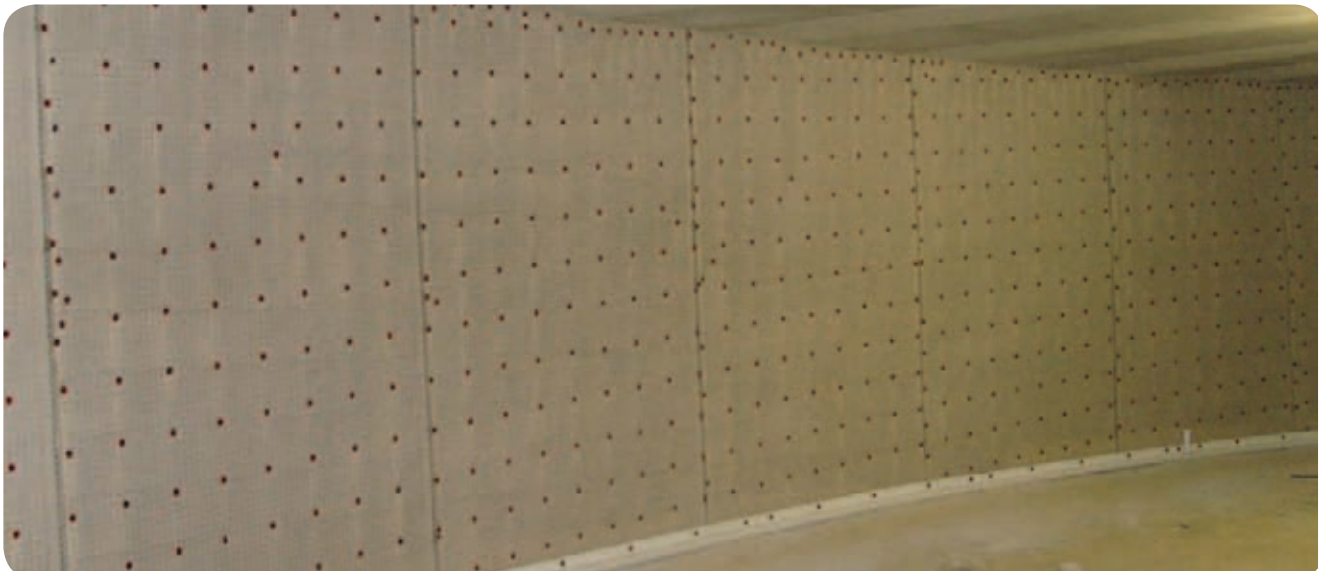
**NEWTON 508**

In the majority of Newton System 500 installations, 8mm stud Newton 508 is the professional waterproofing contractors wall membrane of choice. Newton 508 is also suitable to be used as a flooring membrane within Newton System 500 and often the designer or installer will use the same membrane for both walls and floor.

Newton 508 is very quick to install: Surface preparation to the wall is simply the removal of organic and loose materials. When a free-standing wall finish is utilised in front of the membrane, Newton 508 can be fixed with very few plug fixings, as shown in the upper image. Newton 508 is available in both 2.07m and 2.4m high rolls giving the installer a high degree of flexibility for horizontal fitment. The square stud pattern and inherent memory of HDPE allows for exact and accurate detailing especially at corners.

Where space is at a premium, Newton 508 can be substituted with the 3mm Newton 503. All Newton wall membranes are fixed to the wall with the Newton MultiPlug or Newton Nu-seal Plug.

PRODUCT CODE M1 & M2 STUD DEPTH 8mm ROLL WIDTH 2.4m & 2.07m ROLL LENGTH 20m WEIGHT 35kg & 30kg



**NEWTON 508 MESH**

Newton 508 Mesh should be chosen as the wall membrane if the desired finish is to be dot-&-dab plasterboard or a direct finish such as render, plaster or lime mortar. The high-grade polyethylene mesh is applied to the face of the still hot extruded membrane, which effectively welds the two components together, resulting in a very high quality meshed surface which offers a superb 'key' for the finishing products.

Newton 508 Mesh is often used in conjunction with Newton 508 for when project constraints require a narrower wall finish which is often the case with existing stairwells.

Where space is at a premium, Newton 508 Mesh can be substituted with the 3mm Newton 503 Mesh.

PRODUCT CODE M3 STUD DEPTH 8mm ROLL WIDTH 2m ROLL LENGTH 20m WEIGHT 28kg



**NEWTON 508**

Newton 508 is fitted to the vaulted soffit, arch or tunnel with Nuseal Plugs ready for lining with plasterboard fixed to timber battens. 6mm screws are fixed into the head of the Nuseal Plug to secure the battens.

Battens can continue to be fixed to the wall membrane below the springing line in the same way, or a independent metal stud can be used as shown in the image below.

Newton System 500 is an ideal waterproofing system for vaults, arches and tunnels, as the system is totally unaffected by vibration caused by the traffic above.



**NEWTON 508 MESH**

When a direct finish to the membrane is required Newton 508 Mesh provides the perfect key. The Nuseal Plugs will be fixed at much closer centres, so that the membrane is fixed tightly ready for the finish.

Typical finishes to Newton 508 Mesh are lime mortars, sand & cement renders and plasters. It is not usual to dot and dab plasterboard to Newton 508 Mesh when it is fixed to arches, vaults and tunnels.

In all cases where Newton 508 and 508 Mesh have been applied to arches, vaults and tunnels, the membrane should terminate to a Newton drainage system at the junction of wall and floor so that water diverted by the membrane can be collected and removed from the property.





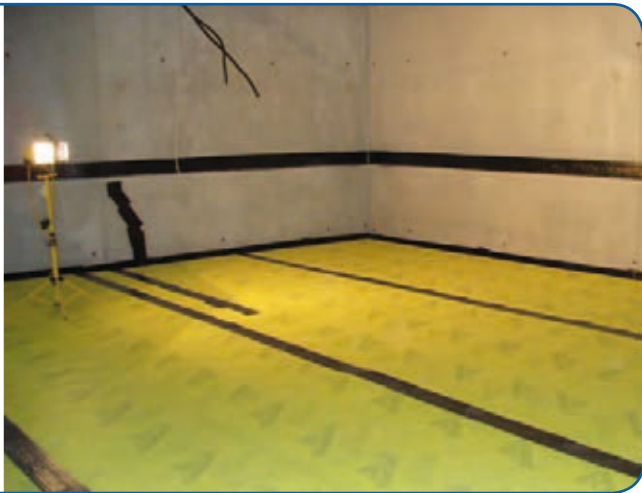
# FLOOR MEMBRANES

## NEWTON SYSTEM 500 FLOORING MEMBRANES

**Newton 503** with its 3mm stud, is a low profile cavity drain membrane ideal for specifications where floor height restrictions exist.

Newton 503 provides a soft cushioning effect on the flooring above and is often the preferred membrane when a timber floating floor is required. Suitable finishes are screed and timber flooring.

When Newton 503 is used as part of Newton System 500 it is essential that a Newton pumping system or a safe form of drainage is specified.



PRODUCT CODE M5 STUD DEPTH 3mm ROLL WIDTH 2m ROLL LENGTH 30m WEIGHT 38kg

**Newton 508** is the most commonly specified wall and floor membrane within Newton System 500 as shown in the image adjacent.

At 0.6mm, the thickest 8mm membrane available in the UK, Newton 508 is extremely tough and durable with high impact and loading capabilities. Suitable finishes are screed and floating timber flooring.

When Newton 508 is used as part of Newton System 500 it is essential that a Newton pumping system or a safe form of drainage is specified.



PRODUCT CODE M1 & M2 STUD DEPTH 8mm ROLL WIDTH 2.4m & 2.07m ROLL LENGTH 20m WEIGHT 35kg & 30kg

**Newton 520** with its 20mm stud profile is usually specified when the slab or raft is of questionable quality and the concern is that water could pass through the concrete itself and not just at the cold joints in the structure.

The recommended finish above Newton 520 is a 65mm sand/cement screed. If other finishing options are being considered, please contact John Newton.

When Newton 520 is used as part of Newton System 500 it is essential that a Newton pumping system or a safe form of drainage is specified.



PRODUCT CODE M4 & M13 STUD DEPTH 20mm ROLL WIDTH 2m ROLL LENGTH 20m & 10m  
WEIGHT 36.30kg & 18.15kg

## NEWTON SPECIALIST FLOORING MEMBRANES

**Newton 601 Slimline** has a unique 1mm profile that allows vapour movement and pressure equalisation to occur below the membrane. 601 Slimline is particularly useful when protecting sensitive flooring from dampness in new concrete as it can be laid as soon as the concrete floor is able to be walked upon.

Suitable finishes are screed and floating timber flooring. Newton 601 Slimline has a very high loading capability of over 1000 kN/m<sup>2</sup> and is often specified within System 500 as a loading DPM within internal load bearing walls.



PRODUCT CODE M6 PROFILE DEPTH 1mm ROLL WIDTH 2.06m ROLL LENGTH 20m WEIGHT 19kg

**Newton 603 Floor-Tile** is a high performance waterproofing and uncoupling floor membrane with a meshed surface suitable for adhering tiling, natural stone or paving. The 3mm studs to the underside provide a vapour pressure equalisation layer.

Newton 603 Floor-Tile creates separation between the floor and the floor covering, bridging stress cracks and other slight defects in the substrate so that they are not transferred to the floor covering above.



PRODUCT CODE M21 & M22 STUD DEPTH 3mm ROLL WIDTH 2m & 1m ROLL LENGTH 30m WEIGHT 28kg & 14kg

**Newton 603 Bonded Floor-Tile** adds an additional anchoring fleece to the studded underside for bonding the membrane to the substrate.

When adhered with Newton Floor Adhesive, Newton 603 Bonded Floor-Tile provides a fully adhered damp and vapour proof membrane with superb soundproofing and cushioning properties as well as uncoupling the finished surface from the substrate.



PRODUCT CODE M7 STUD DEPTH 3mm ROLL WIDTH 1m ROLL LENGTH 30m WEIGHT 28kg

Note: Newton 601 Slimline and 603 Bonded Floor-Tile flooring membranes have no drainage capability and should only be used as the flooring membrane within a Newton System 500 waterproofing system when specified by a qualified waterproofing surveyor. All the above Newton flooring membranes are suitable for use with the majority of under-floor heating systems. Please contact John Newton for assistance if you require confirmation of suitability of the specified system with our products.

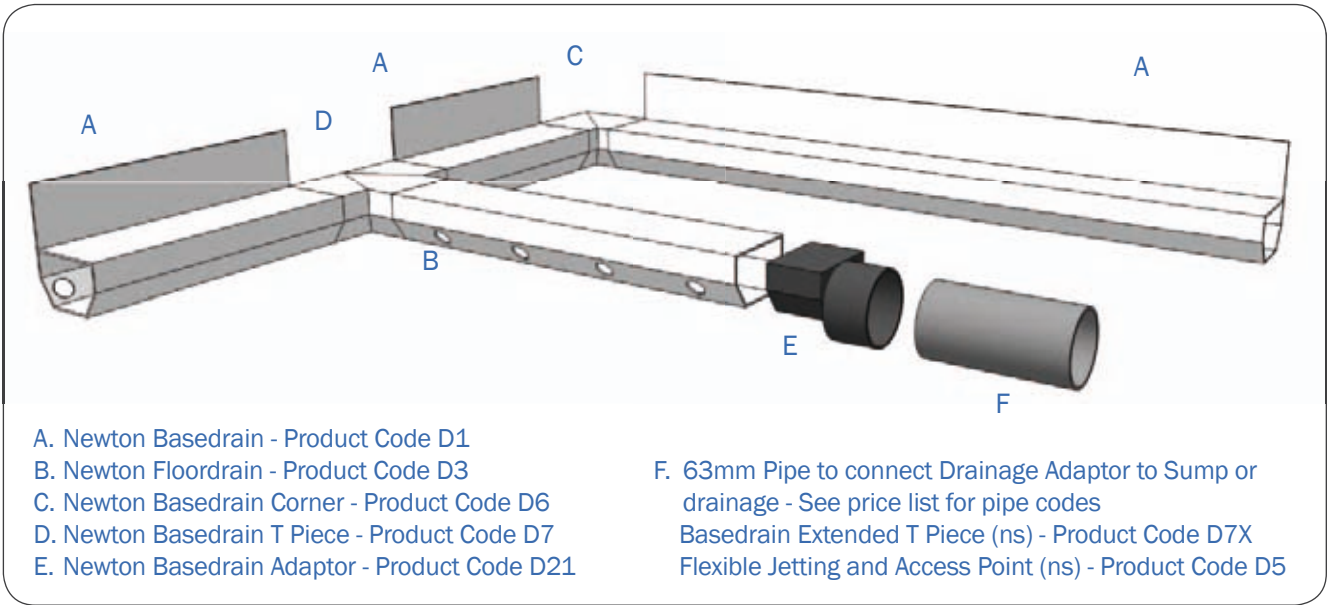


**Newton System 500** is a Type C cavity drain membrane waterproofing system. Water is controlled and collected by designed air spaces for the water to depressurise into, ready for removal from the property. Cavity drain membranes are not able to do this effectively and safely on their own and so the drainage products are a very important part of Newton System 500.

**Newton Basedrain** collects water directly from the join between wall and floor or at the kicker in a raft construction. Newton Basedrain can be placed either in a formed or cut recess, or on top of the floor within a spacer of 50mm to ensure that the floor membrane is above the drainage conduit. This spacer can be either a closed cell insulation, screed or concrete. Water collected by Basedrain is drained to a Newton sump or a safe form of drainage. Basedrain has an upstand that is placed against the wall membrane which has formed spacing lugs that provide a small gap that will collect condensation from the

face of the membrane should this occur. Basedrain Corner Pieces are available for internal and external corners. Basedrain is fully maintainable via access points included in the installation.

**Newton Floordrain** is similar to Basedrain but does not have the upstand and the spacing lugs. Floordrain should be placed above construction joints to the floor to collect water ingress at this weak point in the structure. Floordrain is connected to the Basedrain outer ring with Newton Basedrain T Pieces.



**Newton Baseboard** is an above slab drainage conduit that is used where build constraints prevent the use of Basedrain at the wall/floor junction, for example where the structural raft or slab cannot be cut to make a recess, or where headroom is too tight for the Basedrain to be placed on top of the slab within the 50mm spacer.

Generally used as a remedial drainage system, Baseboard has been successfully used many times as a drainage conduit at the abutment of non-ground bearing slabs forming floors within deep basements.

**Baseboard Purchase Codes**  
Baseboard (length of 2.4m) - D8  
External Corner - D9  
Internal Corner - D10  
End Cap - D11

**Note:**  
Length of Newton Baseboard includes required Hangers, Connector and Mastic.



A Newton pumping system is required unless a safe form of drainage is available - defined as being:

Drainage that is downhill of the property where it is not possible for the water to back-up to the Newton Waterproofing System. "In most cases, the only safe method of removal is a Newton Pumping System."

John Newton have a range of pumps and pumping systems for all requirements of duty and water type, as well as accessories such as alarms, power back up systems, pump control and monitoring systems. Further information on the specific products can be found on page 23, or within the pumping sections of our web site [www.newton-membranes.co.uk](http://www.newton-membranes.co.uk)

PUMPING SYSTEMS



PUMPS



PUMPING ACCESSORIES





Newton System 500 is the perfect system for the waterproofing of existing structures, which fall into two categories: refurbishment and failed waterproofing.



**REFURBISHMENT**  
Newton System 500 is the ideal system for refurbishment of existing structures because it is quick and clean to install. The only surface preparation is a brush to the walls and sweep to the floor to remove debris, loose materials and organic materials. Newton System 500 does not increase stress in the structure by resisting the water pressure.

Part L of the building code requires that refurbished structures are insulated to the same degree as new-build properties. Newton System 500 is the ideal system for incorporation of insulation as we use it as a spacer to the floor and the protection to the wall membrane, usually a metal frame dry-lining system, is designed to incorporate insulation also. Alternative waterproofing requires costly and disruptive preparation and will still require a means of including insulation to the build.

Newton System 500 is nearly always the most cost efficient system.



**FAILED WATERPROOFING**  
Newton System 500 is often specified as a remedial waterproofing solution where other products have failed. These products fail due to poor installation of a system that needs to be 100% defect free to work, poor preparation of the substrate, or commonly in brick structures, the bonded waterproofing coating has induced stress to the structure leading to slight rotation of the wall and floor resulting in cracking of the coating. Vibration is also a factor when hard coatings such as cement based tanking is used.

Newton System 500 does not resist water pressure and so the structure is not stressed as is the case with tanking.

Case studies on numerous successful projects are available at [www.newton-membranes.co.uk](http://www.newton-membranes.co.uk)



When the waterproofing fails, Newton System 500 is the perfect remedial solution. Many designers are recognising the advantages of including Newton System 500 to the Type B waterproof structure because of the possibility of leaks through the construction joints. In doing so they have already included what would be their preferred remedial system within the initial waterproofing design.

We suggest that the structure is designed to be waterproof but with the understanding that it will not be so in the same way that a boat designer expects the boat not to leak, but includes bilge pumps - just in case!



“We at John Newton consider that the combination of Type B construction together with Type C waterproofing, in the form of Newton System 500, to be the sensible approach to waterproofing new build earth retaining structures.”

Newton Lime Inhibitor is a concrete treatment that prevents water from pulling free lime from new concrete. Unless the concrete includes an admix that prevents the leaching of free lime, we recommend that Newton Lime Inhibitor be used to treat the new concrete.

Product code LC1





Newton System 500 is in many cases the preferred solution for the waterproofing of historic structures, as the addition of the system does not induce stresses as would be the case with a pressure resistant coating.



With Newton System 500 it is possible in some circumstances to install a system that is completely reversible, which can be removed at a later date. English, Scottish and Welsh Heritage often stipulate that the waterproofing is both reversible and causes little or no damage to listed buildings.

Tanking systems bond with a chemical 'key' so that the coating is almost impossible to remove and require preparation that is just too damaging to the property for this to be allowed.



The four images show Newton System 500 applied to the subterranean vaults of the Grade One Listed Royal Courts of Justice in Central London. The images show just how flexible and accommodating the Newton membrane, in this case Newton 508 Mesh, can be. The detailing to the vaults was very intricate and had to be completed by the Newton NSBC Contractor to a very high standard ready for plastering.



At the historic Menin Gate, Ypres, Belgium, some of the stone tablets engraved with the names of those who had fallen in and around the town during WWI were beginning to deteriorate and had to be replaced.

The Commonwealth War Graves Commission realised that the very badly damaged tablets were located where the walls are earth retaining and in contact with water from the ground.

Newton 508 membrane was specified and fitted to the retaining walls to protect the new stone tablets from the ground water.

John Newton & Company Ltd. have strong links with the professional specifier and provide a full range of services to aid the correct specification of our products. These include:

- A full range of technical drawings in .dwg (AutoCad 2000) format and .pdf
- 3D details and product representation to assist in visualising the concept
- A technical department with full CAD facilities able to work with native .dwg, .dxf, .vwx and .mcd
- A selection of drawings on the FastrackCAD web site formatted to be entered directly into your drawings

John Newton & Co. Ltd. product information is now listed within NBS Plus, part of the NBS industry standard specification software used by architects, building surveyors and other construction industry professionals. This means that the technical information and guidance for our products is presented to NBS subscribers, in NBS format, at the point in the specification appropriate to our products.

You will be able to access our website, [www.newton-membranes.co.uk](http://www.newton-membranes.co.uk), through the direct link from NBS Plus to obtain further information. We can also provide guidance for the completion of NBS clauses upon request. Simply contact us at the address on the back cover. All information found within NBS Plus is updated four times a year ensuring that specifiers have access to our most recent product information.

We are also RIBA CPD Certified and offer specifiers and designers double-points CPD seminars at premises of their choosing. Please visit the specifier area of our web site for more details.

John Newton are founder members of the PCA Structural Waterproofing Group and have a seat on the Radon Council Committee.

Newton System 500 carries a current BBA certificate.



NEWTON SPECIALIST BASEMENT CONTRACTORS (NSBC)



John Newton will assist the specifier or designer in many ways to ensure that a safe and reliable waterproofing system is specified. Unfortunately, the specifier often allows the system to be installed by those not correctly trained to do so.

Newton System 500 is a professional fit waterproofing system and we recommend that the fitting of Newton System 500 be carried out by trained and assessed waterproofing professionals only.

Newton NSBC Contractors are a select group of specialist waterproofing contractors chosen by John Newton as the recommended installers of Newton System 500. NSBC Contractors are trained by Newton staff and constantly

assessed to ensure they are worthy of the name. Newton NSBC Contractors hold insurance to allow them to take full design and installation liability for the Newton waterproofing system. In our experience the contracts that are the most successful are where the specifier has taken our advice and included an NSBC Contractor at an early stage in the design process. The NSBC ensures that the main contractor is fully aware of their obligations to have the site ready and able to accept the waterproofing system.

We believe that we have the best waterproofing system available, and we are confident that we can demonstrate this. We also have a team of many of the best waterproofing contractors in the UK. We have a responsibility to give best advice to our clients. Our best advice is to use a Newton NSBC Contractor to install Newton System 500.

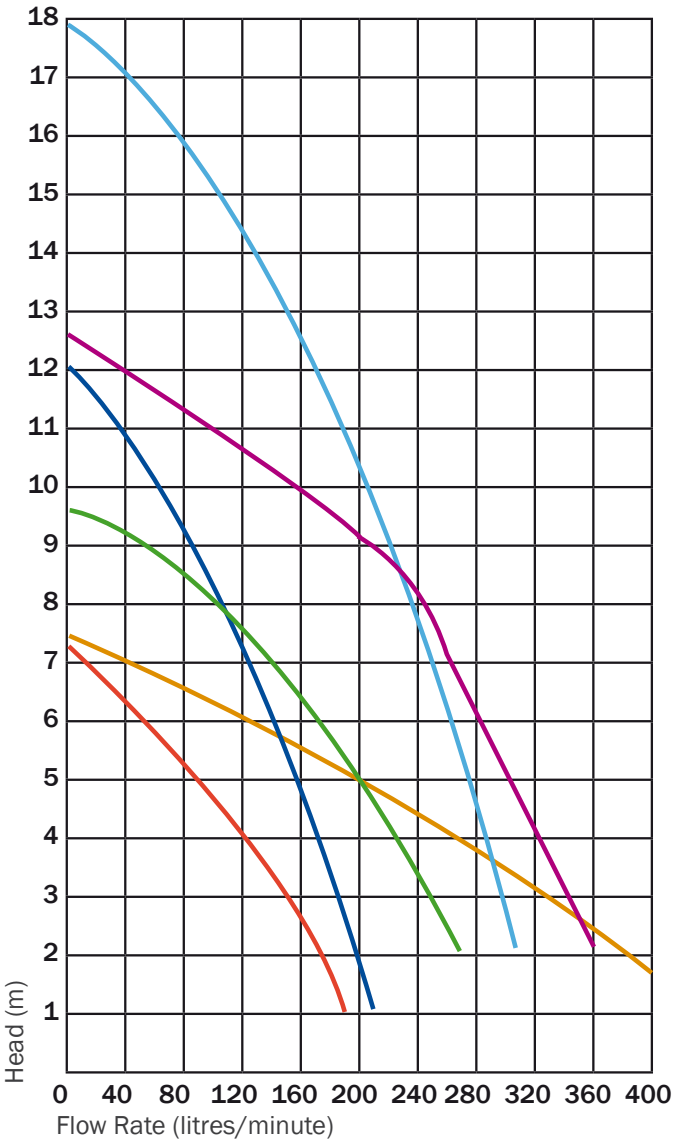


ANCILLARIES	Product	Purchase Code	Unit of sale	Size Width x Length	Weight / kg
	Newton MultiPlug	A1	Bag of 100	10mm x 60mm	1.00 /bag
	Newton Nuseal Plug	A2 (Red) & A3 (White)	Bag of 100	11mm x 70mm	1.00 / bag
	Newton MultiPlug Pin	A4	Bag of 100	5mm x 56mm	0.25 / bag
	Newton Waterseal Tape	A5 (Black) & A5W (White)	Roll	30mm x 22.5m	2.00
	Newton Waterseal Rope	A6 (Black) & A6W (White)	Roll	10mm x 4.75m	1.00
	Newton Overtape	A7 (Black) A8 (Black) A9 (White)	Roll	150mm x 20m 100mm x 20m 150mm x 20m	5.00 3.00 5.00

50mm & 63mm pressure pipe and fittings are also available.  
Please call our sales staff on 020 7237 1217 for more information.

Product	NP150	NP400	NP400W	NP750 Ranger	NP750	NP750W	1200C Unit System	3000C Unit System	Alarm	Control Panel Pro	Dialer
Product	P1	P2 & P3	P4	P10	P5 & P6	P8	C1 & C3	C2 & C4	PA12	CP2	PA5
Width	117	117	185	180	184	173	198	169	142	270	31
Length	203	203	241	240	290	236	395	420	30	270	150
Height	319	319	328	410	385	394	80	152	82	100	115
Power	150w	400w	400w	750w	750w	750w	1200w	3000w	9v	230v	12v
Weight	6.10	11.30	7.60	13.90	19.30	9.90	3.90	8.30	0.40	6.00	0.42
Used With	Titan-Pro & Titan	Titan-Pro & Titan	Titan-Pro	Trojan	Titan-Pro	Titan-Pro	NP150 NP400 NP400W	NP750 Ranger NP750 NP750W	Trojan, Titan-Pro, & Titan	Manual versions of all Newton Pumps	PA12 & CP1

SUMP SYSTEMS			
System	Pumps	Discharge Lines	Product Code
Titan-Pro	1 x NP150	One	TPW-TP1
Titan-Pro	2 x NP150	One	TPW-TP2
Titan-Pro	1 x NP400	One	TPW-TP3
Titan-Pro	2 x NP400	One	TPW-TP4
Titan-Pro	2 x NP400	Two	TPW-TP5
Titan-Pro	1 x NP400W	One	TPW-TP15
Titan-Pro	2 x NP400W	One	TPW-TP16
Titan-Pro	2 x NP400W	Two	TPW-TP17
Titan-Pro	1 x NP750	One	TPW-TP6
Titan-Pro	2 x NP750	One	TPW-TP7
Titan-Pro	2 x NP750	Two	TPW-TP8
Titan-Pro	1 x NP750W	One	TPW-TP12
Titan-Pro	2 x NP750W	One	TPW-TP13
Titan-Pro	2 x NP750W	Two	TPW-TP14
Titan	1 x NP150	One	T1
Titan	2 x NP150	One	T3
Trojan	1 x Ranger	One	TR1 (1m Sump)
Trojan	2 x Ranger	One	TR2 (1m Sump)
Trojan	1 x Ranger	One	TR3 (1.5m Sump)
Trojan	2 x Ranger	One	TR4 (1.5m Sump)
Trojan	1 x Ranger	One	TR5 (2m Sump)
Trojan	2 x Ranger	One	TR6 (2m Sump)







# JOHN NEWTON

& COMPANY LIMITED (EST. 1848)

**John Newton & Company Ltd.**  
12 Verney Road, London SE16 3DH  
Tel 020 7237 1217 Fax 020 7252 2769  
email [info@newton-membranes.co.uk](mailto:info@newton-membranes.co.uk)  
[www.newton-membranes.co.uk](http://www.newton-membranes.co.uk)



"As part of our policy of continuous product improvement we reserve the right to change our specifications at any time"